

Ambani
METALS

**RELIABLE FOUNDATION,
REMARKABLE FUTURES!**

COMPANY PROFILE

Table of Content

About the Company

- Introduction
- Our Mission
- Our Vision

Products

- Mass Transfer Products
- Precision Stamping Tools & Deep Drawn Products
- Process Equipments
- Wire Mesh & Perforated Sheets
- Tanks and Columns
- Custom Metals Brackets and Enclosures
- Angles and Channels

Services

- Product Development – as per Drawing and Calculations
- Reverse Engineering
- Laser Cutting and Bending Services
- Design and Process Calculation Services
- CNC and VMC Solutions
- Laser Marking and Engraving
- 3D Printing Services
- Deep Drawing and Precision Stamping as per requirement

Raw Material

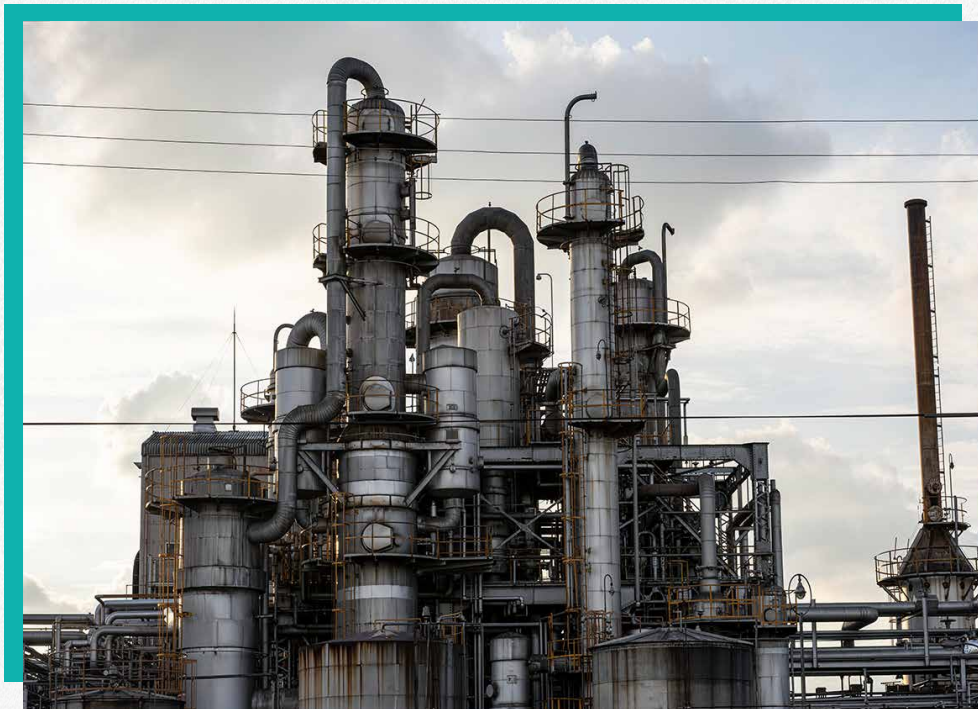
- Sheet, Plate And Coil
- Pipes And Tubes
- SS Round Bars

Contact Us

- Head Office
- Registered Office
- Work Office
- Contact Person
- Email
- Website

About the Company

With an illustrious history spanning over 25 years, Ambani Metals has evolved into a distinguished entity since its establishment on April 24, 1998. Originating as a major importer and stockist of steel raw materials, we have seamlessly transitioned into a dynamic force in manufacturing and fabrication. Our specialized product range, encompassing mass transfer equipment, internals, and precision-stamped items, reflects our unwavering commitment to quality and versatility. Ambani Metals proudly holds ISO 9001:2015 certification and is a distinguished member of MAASMA and MSME. As leading exporters and suppliers to a diverse clientele, including MNCs, blue-chip companies, and government bodies, we take pride in our legacy of meeting the multifaceted needs of our clients, solidifying our position as a trusted partner in their success.



Manufacturing Excellence:

At the core of Ambani Metals lies a cutting-edge manufacturing facility, where precision and innovation converge to produce a diverse array of high-quality products. From intricate mass transfer equipment to precision-stamped items, our manufacturing prowess sets industry benchmarks. Our commitment to excellence is underscored by our ISO 9001:2015 certification, symbolizing our dedication to the highest standards. As we continue to invest in advanced technologies and skilled professionals, we ensure that our manufacturing capabilities remain at the forefront of the industry.

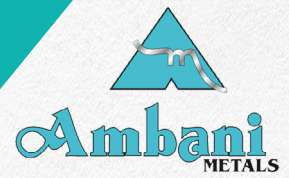
Raw Material Stock:

Complementing our manufacturing excellence, Ambani Metals maintains an extensive stock of premium steel raw materials. As one of the largest importers and stockists, we ensure a readily available supply of top-grade steel, facilitating swift and efficient production processes. Our strategic stock management positions us as a reliable partner, providing seamless solutions to our clients' evolving needs.

Quality Policy:

At Ambani Metals, quality is not just a standard; it is our commitment to delivering products that surpass expectations. Our rigorous quality management system, aligned with ISO 9001:2015, governs every aspect of our manufacturing processes. From meticulous raw material selection to stringent quality checks throughout production, we adhere to the highest industry standards. This unwavering dedication to quality ensures that each product bearing the Ambani Metals name is a testament to precision, reliability, and excellence.

RELIABLE FOUNDATION, REMARKABLE FUTURES.



Our Mission

- Drive continuous innovation and growth in manufacturing and export.
- Contribute to the well-being of the community through the NGO "Abol Jeev Maitri."
- Foster a culture of social responsibility and sustainability in all business practices.
- Promote education and skill development within the communities we serve.
- Ensure the highest standards of product quality and customer satisfaction.
- Collaborate with local businesses and suppliers to support regional economic growth.
- Create a safe and inclusive workplace that values diversity and employee development.
- Actively engage in initiatives that promote environmental conservation and reduce our ecological footprint.

Our Vision

- Expand operations, scale up, and open more units for a profound global impact.
- Be a catalyst for positive transformation in lives and communities on a global scale.
- Set industry benchmarks in environmental sustainability and ethical business conduct.
- Embrace cutting-edge technologies to remain at the forefront of the metal manufacturing industry.
- Cultivate a workplace culture that encourages creativity, diversity, and employee well-being.



Head Office

Office no. 2, 2nd floor, Nebula Tower, Sindhi Lane, Mumbai - 40004, Maharashtra, India.



Contact Person

Jay Shah - Domestic Division - +91 83692000178
Manan Bokadia - Export Division - +91 9930498865



Email

sales@ambanimetal.com
export@ambanimetal.com



Website

<http://www.ambanimetal.com>

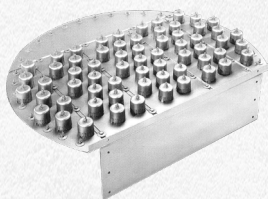
Products

At Ambani Metals, we take immense pride in offering a comprehensive range of high-quality industrial products designed to meet the diverse needs of our esteemed clients. With a steadfast commitment to excellence and innovation, we have established ourselves as a trusted provider of premium solutions across various sectors. Our extensive product line encompasses a wide array of offerings for your needs.

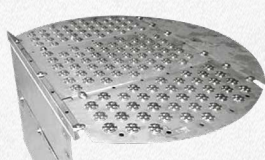
Mass Transfer Products

Our advanced mass transfer products are engineered to facilitate efficient substance transfer processes, ensuring optimal performance and reliability in various industrial applications.

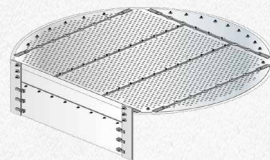
Distillation Trays



Bubble Cap Tray



Sieve Tray

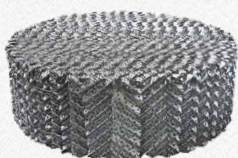


Floating Valve Tray



Fixed Valve Tray

Structured Packing



Series



High Capacity Vantage



Lab



Wire Mesh

Random Packing



Ceramic

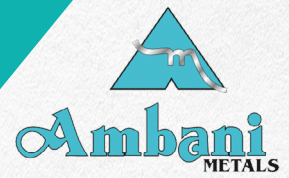


Plastic

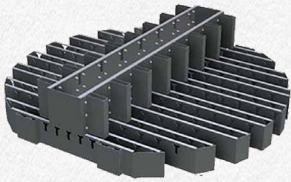


Metal

RELIABLE FOUNDATION, REMARKABLE FUTURES.



Column Internals



Through Type Distributor



Feed Pipe Distributor



L-L Extraction Distributor



Chimney Tray Collector

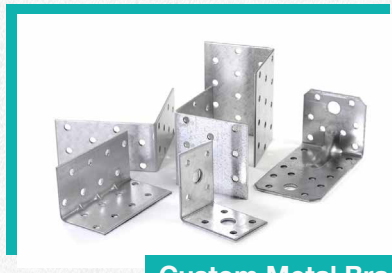
and more...

Precision Stamping and Deep Drawn Products

Experience precision and reliability like never before with our meticulously crafted precision stamping tools and deep drawn products, tailored to meet the most demanding requirements with utmost accuracy.



Industrial Washer



Custom Metal Brackets



Custom Metal Enclosures



Electronic Components



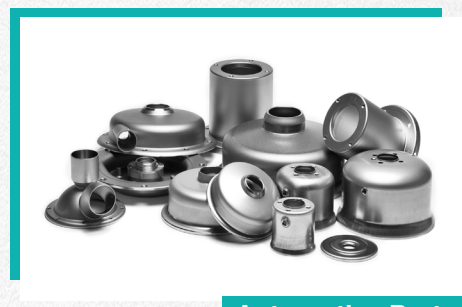
Appliance Parts



Surgical Instruments



Bubble Caps

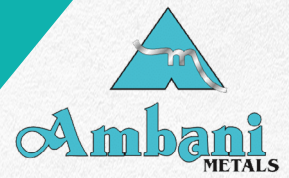


Automotive Parts



Spray Balls

RELIABLE FOUNDATION, REMARKABLE FUTURES.



Process Equipments

From reactors to distillation units, our top-of-the-line process equipment is built to deliver unparalleled performance, efficiency, and durability, empowering you to achieve your production goals with confidence.



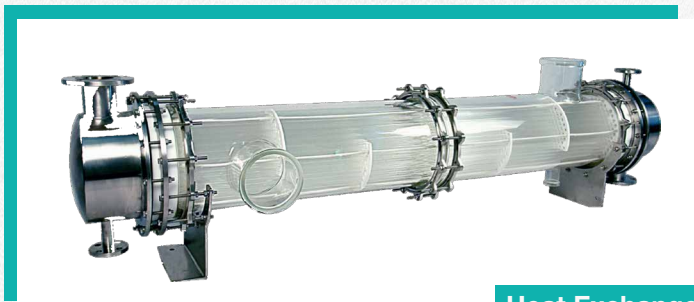
Condenser



Static Mixers



Metal Forming



Heat Exchanger



Paddle Mixers

Wire Mesh & Perforated Sheets

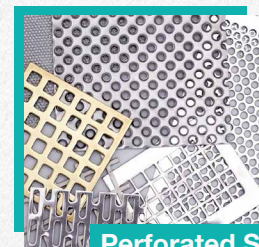
Explore our range of wire mesh and perforated sheets, meticulously crafted to meet stringent quality standards and provide exceptional strength, versatility, and durability in diverse industrial settings.



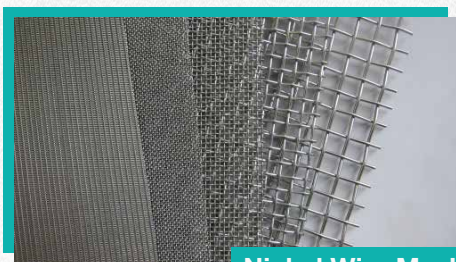
Monel Wire Mesh



Phosphor Bronze Wire Mesh



Perforated Sheets



Nickel Wire Mesh



Stainless Steel Wire Mesh



Metal Perforated Sheets

Tanks and Columns

Our tanks and columns provide robust and reliable solutions for the safe storage and efficient processing of various substances, ensuring optimal performance and adherence to industry standards.



Distillation Column



Distillation Tanks



Distillation Storage

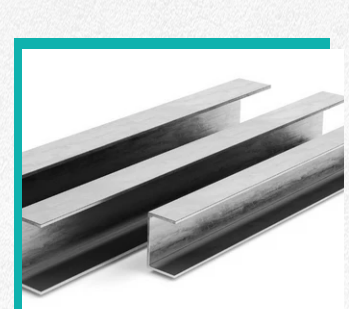
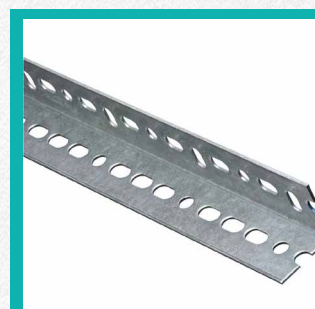
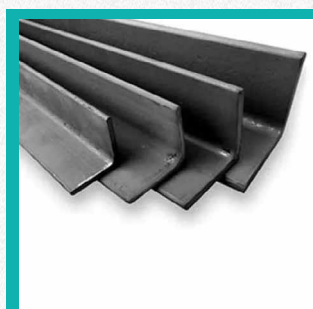
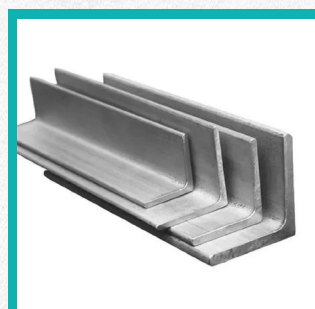
Custom Metals Brackets and Enclosures

Experience tailored precision with our custom metal brackets and enclosures, expertly crafted to provide secure support and protection for your valuable equipment and components, meeting your exact requirements.



Angles and Channels

Versatile and durable, our angles and channels serve as essential structural components in a wide range of industrial applications, offering superior strength and stability to support your projects effectively.



Services

Ambani Metals offers a comprehensive suite of services aimed at meeting the diverse needs of our clientele. From initial consultation to project execution and ongoing support, we prioritize customer satisfaction at every stage. Our services encompass design and engineering expertise, ensuring that our mass transfer solutions are precisely tailored to each client's unique requirements. We provide seamless manufacturing processes, leveraging cutting-edge technology and quality assurance protocols to deliver products of exceptional durability and performance. Additionally, our logistics and delivery services ensure timely and reliable distribution to clients across the globe. At Ambani Metals, we are dedicated to exceeding expectations, delivering unparalleled service excellence to every client, every time.

Product Development – as per Drawing and Calculations



Leverage our expertise in product development to transform your concepts into reality with precision and accuracy, adhering strictly to your provided drawings and calculations.

Reverse Engineering



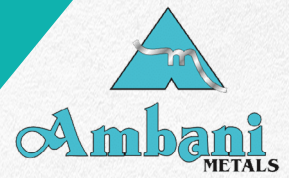
Harness the power of reverse engineering to unlock valuable insights and optimize existing designs for enhanced performance and efficiency, facilitated by our experienced team of engineers and technicians.

Laser Cutting and Bending Services

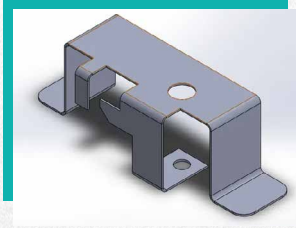


Experience seamless precision and versatility with our state-of-the-art laser cutting and bending services, delivering superior results for a wide range of materials and applications.

RELIABLE FOUNDATION, REMARKABLE FUTURES.



Design and Process Calculation Services



Rely on our skilled professionals to provide comprehensive design and process calculation services, ensuring optimal performance, efficiency, and reliability for your projects.

CNC and VMC Solutions



Explore our cutting-edge CNC and VMC solutions, designed to deliver unparalleled precision, speed, and accuracy for your machining needs, backed by our commitment to quality and excellence.

Laser Marking and Engraving



Add a personalized touch to your products with our advanced laser marking and engraving services, offering precision, durability, and customization options to suit your branding and identification requirements.

3D Printing Services



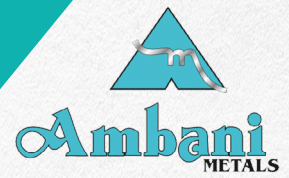
Embrace the future of manufacturing with our innovative 3D printing services, enabling rapid prototyping, customization, and cost-effective production of complex geometries with unmatched speed and efficiency.

Deep Drawing and Precision Stamping as per requirement



Benefit from our expertise in deep drawing and precision stamping, tailored to your specific requirements and specifications, ensuring superior quality and performance for your components.

RELIABLE FOUNDATION, REMARKABLE FUTURES.



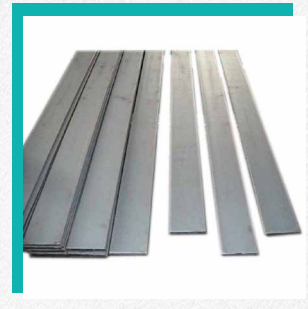
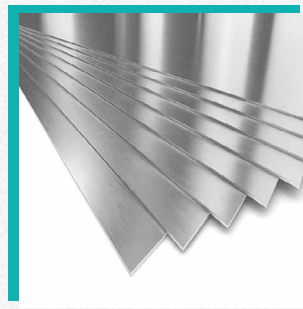
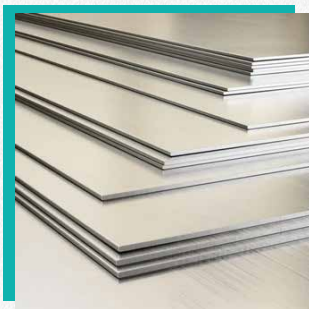
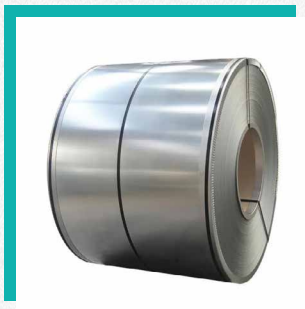
Diversified Raw Material Stock

Sheet, Plate, Coil, and Strips

Thickness Range: From an ultra-fine 0.1 mm in strip coils to robust 32 mm thick heavy-duty plates

Grades: Encompassing SS 304/L, SS 316/L, SS 321, Titanium, Duplex, and Super Duplex, Hastelloy, Inconel, and Monel

Our stock reflects a comprehensive selection catering to applications requiring precise strip coils for intricate projects to heavy-duty plates for industrial behemoths. We guarantee use of prime material of utmost quality for all our stock.

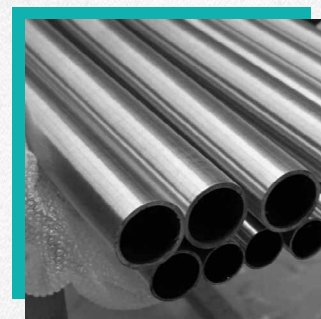


Pipes and Tubes

Variety: We offer an extensive range, including Welded, Seamless, Fabricated and Semi-welded pipes

Grades: Covering SS 304/L, SS 316/L, Titanium, Monel, Inconel, Duplex, Super Duplex, Hastelloy, Inconel, and Monel

Our diverse inventory ensures suitability for applications ranging from high-pressure industrial processes to precision engineering. From robust 3/4" pipes to expansive 16" tubes, our diverse range of steel raw materials ensures precision and reliability for every project. We provide matte/mirror or silver finish as per customer's request.



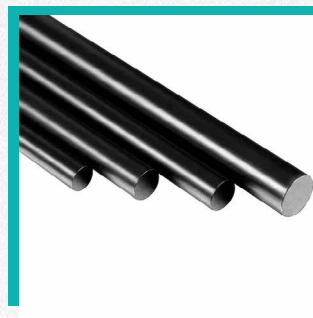
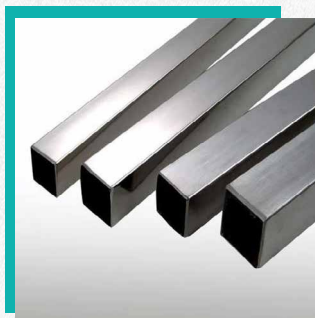
SS Round Bars

Options: Stock includes both Black Bars and Bright Bars

Grades: Encompassing SS 304/L, SS 316/L, Titanium, Monel, Inconel, Duplex, Super Duplex, Hastelloy, Inconel, and Monel

Range: Round, Square, Hexagon, Flat and Hollow Bars

Tailored to meet the requirements of precision machining and structural applications.



Contact us

Thank you for your interest in Ambani Metals. Whether you have inquiries about our mass transfer solutions, require assistance with product specifications, or seek further information about our services, our dedicated team is here to assist you. Please feel free to reach out to us via any of the following channels:



Head Office

Office no. 2, 2nd floor, Nebula Tower, Sindhi Lane, Mumbai - 40004, Maharashtra, India.

Registered Office

63-a, Bhandari Street, (1st Kumbharwada), Near Round Temple, Mumbai-400 004

Work Place

B13, Prime Industrial Estate, Devdal Village, Saggada Road, Chinchoti Bhiwandi Road, Vasai, Dist.palghar - 401208

Plot No. 553, Kalamboli Steel Market, Kalamboli, Navi Mumbai - 410 218



Contact Person

Jay Shah - Domestic Division - +91 83692000178
Manan Bokadia - Export Division - +91 9930498865



Website

<http://www.ambanimetal.com>



Email

sales@ambanimetal.com
export@ambanimetal.com

At Ambani Metals, we genuinely anticipate the chance to collaborate with you and fulfill your requirements with our extensive expertise and unwavering dedication to excellence. Our team is committed to going above and beyond to understand your unique needs and deliver solutions that not only meet but exceed your expectations.

Rest assured that when you choose Ambani Metals, you're choosing a partner who is fully invested in your success and will work tirelessly to support your goals. We eagerly await the opportunity to demonstrate the value we can bring to your projects and contribute to your continued growth and prosperity.